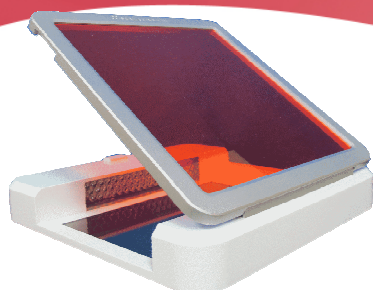


# UltraSlim-LED

For superior gel illumination



Compact, uniform lighting and dual LED for superior sensitivity

Blue light transilluminators are often used as an alternative to UV transilluminators when users wish to use “safe dyes”. A blue light transilluminator is a “safe” light source, in that the user is not exposed to harmful UV radiation and samples are free from photonicking.

◆ **Compact**

- mini gel size

◆ **Even blue epi LED illumination**

- high sensitivity with improved S/N ratio

◆ **Image a range of fluorophores**

- EtBr, SYBR®Safe, GelGreen, SYBR®Gold, SYBR®Green, SYPRO®Ruby, SYPRO®Orange, GelRed

◆ **Safe**

- LED is safe to skin and eyes with no damage to DNA

Dimension	210(d) x 210(w) x 30mm
Gel size (mm)	100 x 120
Wavelength (nm)	470nm
Power	DC 24V 0.65A
Weight	1.3kg





# WolfLabs

**Pricing on any accessories shown can be found by keying the part number into the search box on our website.**

The specifications listed in this brochure are subject to change by the manufacturer and therefore cannot be guaranteed to be correct. If there are aspects of the specification that must be guaranteed, please provide these to our sales team so that details can be confirmed.

**[www.wolflabs.co.uk](http://www.wolflabs.co.uk)**

**Tel : 01759 301142**

**Fax : 01759 301143**

**[sales@wolflabs.co.uk](mailto:sales@wolflabs.co.uk)**

Please contact us if this literature doesn't answer all your questions.